

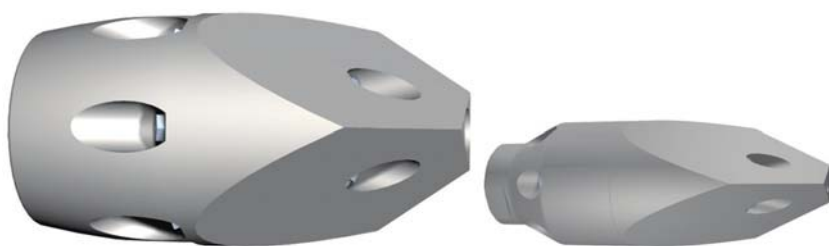
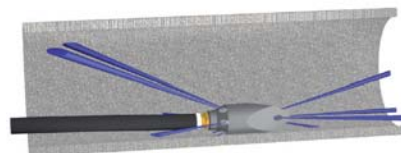
Buses pointues

Toute l'énergie est concentrée vers l'avant au travers des 4 jets frontaux. Les arêtes tranchantes découpent, déchirent et transpercent chaque obstruction. Fabrication en acier trempé résistant à l'usure. A partir de l'art. 60.050, toutes les buses sont munies d'inserts céramique interchangeables. L'efficacité, comparée au percement direct, est considérablement améliorée et la durée de vie considérablement augmentée.

Domaine d'application

- Passage dans les conduites totalement bouchées
- Ouverture dans un réseau de racines
- Percer une conduite gelée
- Rinçage des tubes acier lors de forages pousse-tube

Pression de travail jusqu'à 250 bar



Buses pointues

Buses pointues 1/8" - 1 1/4"



60.012SL15



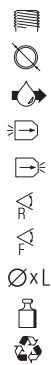
60.025SL15

60.025SL30



60.038-30

60.038-60



1/8	1/4		3/8	
20 - 40	22 - 50		28 - 100	
15	20		30	61.3
3 × Ø 0.95	3 × Ø 0.90	4 × Ø 1.35	3 × Ø 1.30	3 × Ø 1.50
4 × Ø 0.50	4 × Ø 0.60	4 × Ø 0.70	4 × M4	4 × M4
20°	20°		20°	
15°	15°		15°	
16 × 25	19 × 33		25 × 45	
20	30		70	
—	—		—	



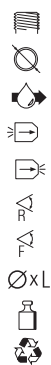
60.050



61.0504










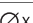


61.050



1/2		1/2
40 - 150		40 - 150
50		50
3 × M6		3 × M6
4 × M4		3 × M4
20°		20°
15°		15°
31 × 55		31 × 55
140		140
x		x

High Performance Tool  **golden jet®**

	Raccord fileté ["]		Jet frontal		Poids [g]
	Champ d'application [mm]		Angle de jet arrière		Recyclage
	min. l/min à 100 bar		Angle de jet avant		
	Jet de poussée		Dimensions [mm]		

Buses pointues



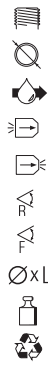
60.075



61.0504



61.075



3/4
60 - 250
100
3 × M6
4 × M4
20°
15°
38 × 80
320
x

3/4
60 - 250
100
3 × M6
3 × M4
20°
15°
38 × 80
320
x



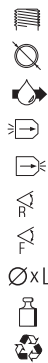
60.100



61.1004



61.100



1
100 - 300
150
6 × M6
4 × M6
20°
15°
48 × 90
505
x

1
100 - 300
150
6 × M6
3 × M6
20°
15°
48 × 90
505
x

	Raccord fileté ["]		Jet frontal		Poids [kg]
	Champ d'application [mm]		Angle de jet arrière		Recyclage
	min. l/min à 100 bar		Angle de jet avant		
	Jet de poussée		Dimensions [mm]		

High Performance Tool

enz golden jet®

